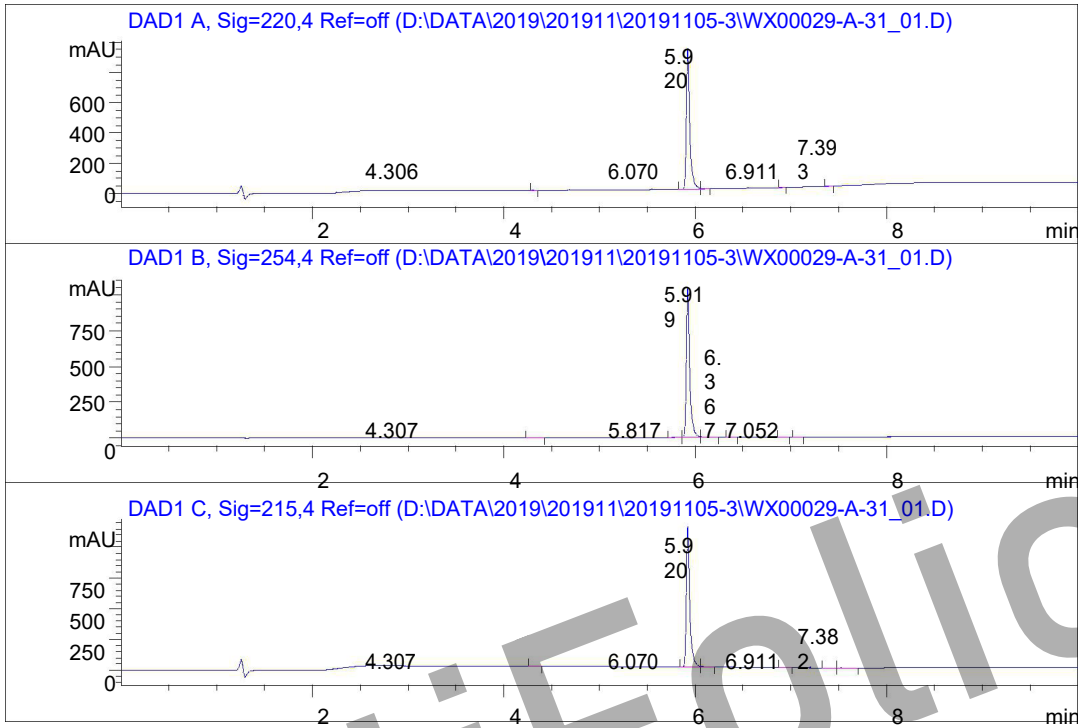


Batch NO. : A-11419  
 CAS NO. : 154992-24-2  
 Data File : D:\DATA\2019\201911\20191105-3\WX00029-A-31\_01.D  
 Acq. Method : D:\DATA\2019\201911\20191105-3\10-80AB\_10MIN\_M3.M  
 Column : Eclipse Plus C18, 4.6\*100mm\*3.5um  
 Inj. time : 2019-11-05 17:22:54  
 Inj. Volumn : 1.00  
 Inj.Location: P2-E-04  
 Instrument : HPLC G  
 Operator : Nico W.



Signal: DAD1 A, Sig=220,4 Ref=off

#	Meas. Ret. Tim	Height	Area	Area %
1	4.31	2.123	4.046	0.18
2	5.92	919.473	2247.267	99.19
3	6.07	3.392	8.370	0.37
4	6.91	1.133	2.264	0.10
5	7.39	1.173	3.582	0.16

Signal: DAD1 B, Sig=254,4 Ref=off

#	Meas. Ret. Tim	Height	Area	Area %
1	4.31	1.662	3.928	0.15
2	5.82	0.273	1.523	0.06
3	5.92	1057.950	2524.406	99.13
4	6.08	3.345	10.861	0.43
5	6.37	0.574	1.296	0.05
6	6.91	1.088	2.711	0.11
7	7.05	0.687	1.808	0.07

Signal: DAD1 C, Sig=215,4 Ref=off

#	Meas. Ret. Tim	Height	Area	Area %
1	4.31	2.615	6.939	0.24
2	5.92	1131.105	2796.298	99.03
3	6.07	4.574	12.755	0.15
4	6.91	1.407	4.652	0.16
5	7.38	1.257	5.149	0.18
6	7.52	2.365	12.315	0.23

ActiFolic.nl